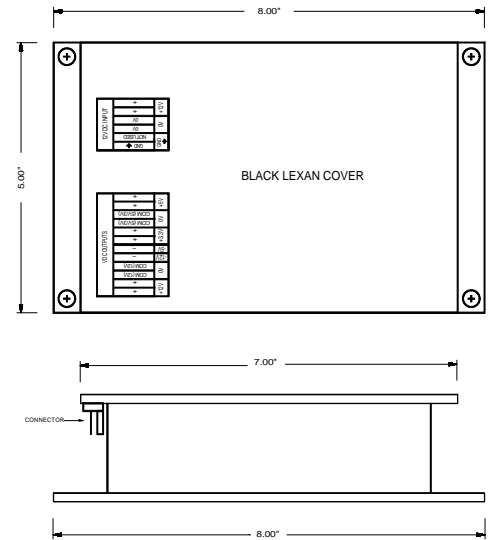


100W, 12V-INPUT DC/DC CONVERTER

5 OUTPUTS FOR MOBILE COMPUTERS AND OTHER PROFESSIONAL APPLICATIONS

SHP410

- Made in North America
- Very high quality
- Competitive price
- Convection/conduction cooled - no fan
- Dual output
- Fully protected



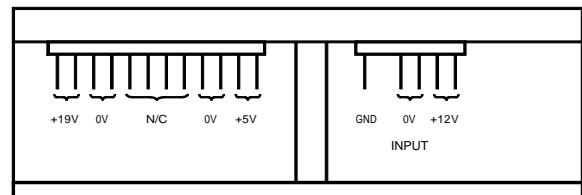
This field-proven DC/DC converter is a complete turn-key unit including input filter, hold-up capacitors and output filter. Features include 160KHz switching frequency, low component count, high efficiency and reliability. All power devices are conduction cooled making the unit suitable for severe environmental applications. Customized, potted versions are available for heavy-duty industrial or military requirements. A range of hardware for mounting the converters for different system applications already exists.

SPECIFICATIONS

<p>Input Voltage 12VDC nominal Operating Range: 10...14.4VDC</p> <p>Input Protection Reverse polarity protection by crossbar diode and fuse Inrush current limiting</p> <p>Input Isolation 500 VDC input to output, input to chassis, output to chassis</p> <p>EMI EN 55022 Class A as a minimum</p>	<p>Output Voltage/Current 3.3VDC@4A +5VDC@3A +12VDC@5A -12VDC@0.25A -5VDC@0.2A</p> <p>Line Regulation 0.5%</p> <p>Load Regulation Maximum $\pm 1.5\%$ for both outputs from no load to full load</p>	<p>Output Ripple/Noise High frequency ripple is better than 35mVrms or 100mVpp for all outputs (20MHz BW)</p> <p>Temperature Drift 0.03% per degree C over operating temperature range</p> <p>Operating Temperature Range 0°C to +50°C for full specifications</p> <p>Output Protection Rectangular current limiting with hiccup mode short circuit protection</p>	<p>Output Over-voltage Protection Transzorbis installed on each output</p> <p>Package Size Open frame. PCB size: 5"X7" Base Plate: 5" x8" Converter height: 1.85"</p> <p>Input/Output Connections Connector header 0.156 pin spacing</p>
--	--	--	---

Enhancements to these general specifications and customizing can be accommodated upon request. Designed to meet all approval requirements. Specifications subject to change. Warranty: twelve months subject to application within good engineering practice.

PIN-OUT DIAGRAM:



Designer and manufacturer of quality converters, inverters, UPS systems, complete rack mount systems and DC-input fluorescent lamp inverters since 1982. Custom or standard. ABSOPULSE is a BABT-approved Facility

ABSOPULSE
ELECTRONICS LTD.

ABSOPULSE ELECTRONICS LTD

110 Walgreen Road, Carp, Ontario K0A 1L0, Canada

Tel: (613) 836-3511 Fax: (613) 836-7488

E-mail: absopulse@absopulse.com

Visit us at www.absopulse.com